

# SonaSpray<sup>TM</sup> fc

NBSPlus

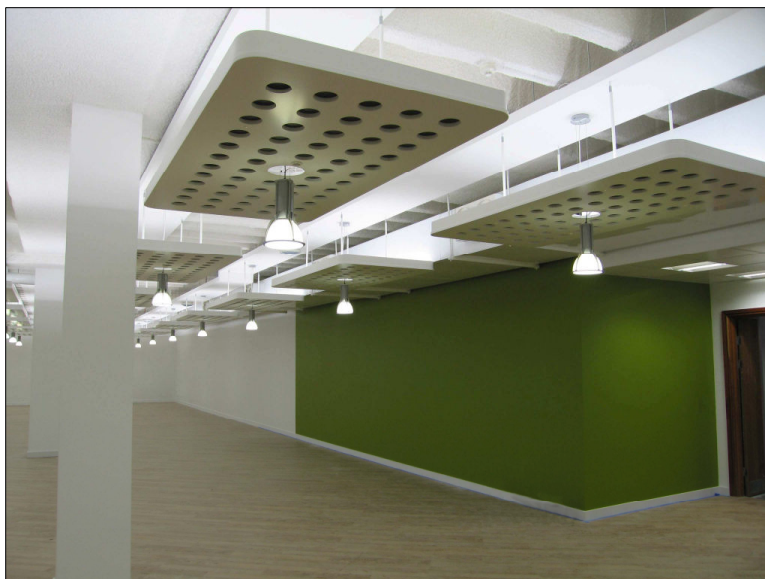
[click here for NBS spec](#)

## SPRAY-ON ACOUSTIC DECORATIVE FINISH

### Sound Absorber

SonaSpray fc is a one coat joint free decorative acoustic finish. SonaSpray fc is a sound absorber that is spray applied to virtually any clean surface and any shape of surface; It has a lightly textured firm finish.

SonaSpray fc will conform to most surface contours, so in addition to flat surfaces it can be applied to:- barrel vaults, domes, corrugated decks, pan construction and other complex surfaces. The high performance adhesive will bond to virtually all common construction materials including plaster, wood, metal and concrete. Some surfaces (such as water stained ceilings, wood and oxidized metal) will require sealing to prevent migratory staining of the SonaSpray finish. SonaSpray fc can be installed where panels or stretch fabrics are impossible and with thin coatings is the best sound absorber.



**Carbon neutral - Low Embodied Energy - Good for the Environment - Recyclable**  
Safe recycled natural cellulose fibre. Future reconstruction of buildings may require removal of SonaSpray sound absorber, it can be recycled or disposed of as a non-special waste - your local authority environmental department will give advice on recycling.



**Typical applications:** This sound absorber is suited to ceilings of: reception areas, schools, public buildings, hotels, conference and board rooms [see left: SonaSpray fc arctic white applied to feature curve ceiling]. SonaSpray fc is the sound absorber finish that transforms a noisy reverberant space into one with a pleasant acoustic ambience with clarity of speech and music.



## North Herts College

The atrium of the college is used for reference studies in addition to being the college reception and having a busy coffee bar; potentially an acoustic disaster!

The architect specified SonaSpray fc which converts the inside surface of the curved front wall into an effective sound absorber with a seamless decorative finish.

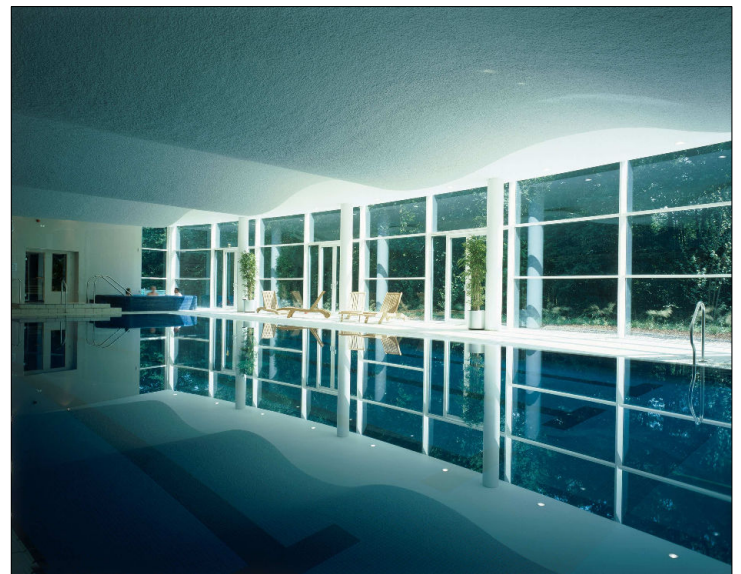
The outcome is a multi use space with a comfortable acoustic ambience.

North Herts college was opened by the Queen in 2004.



## Holmes Place Fitness Centre Swimming Pool

SonaSpray fc in white applied to a feature wave design ceiling is an ideal sound absorber. SonaSpray fc offers other useful features; it is spray-applied and covers the wave design ceiling with a joint free monolithic coating. SonaSpray fc helps to reduce condensation in the pool area when it is combined with appropriate ventilation. SonaSpray fc will provide the pool with a bright, attractive ceiling for years to come.



Superior acoustic control, a highly reflective finish, the sound absorber with the ability to conform to any substrate configuration and an attractive, uniform texture make SonaSpray fc the best ceiling finish for new construction or renovation projects. Our range of finishes offers the ideal ceiling treatment for most acoustic or thermal insulation requirements. Contact Oscar Acoustics for complete details on how SonaSpray can improve your building projects.

## Technical Information

**Acoustic DATA:** SonaSpray fc installations can be tailored to meet your specific project acoustic need. There is a choice of finish; you may select texture, colour and acoustic performance. SonaSpray fc can be applied at variable thickness and variable areas to provide designed acoustic ambience. It is spray applied to the full sound absorber thickness in one application.

### SonaSpray fc standard absorption coefficients

Thickness	125Hz	250Hz	500Hz	1000Hz	2000Hz	4000Hz	NRC
8mm	0.07	0.18	0.63	0.78	0.90	1.01	0.60
12mm	0.09	0.22	0.71	0.94	1.02	1.01	0.70
16mm	0.11	0.34	0.85	0.94	1.04	1.04	0.80
20mm	0.12	0.34	0.85	0.99	1.04	1.04	0.80

Test DATA certified by TNO Technical University Delft NL. Tests were on a solid backing, a sound absorbing fc panel substrate with air space behind the panel will change absorption; normally there is improved absorption at low frequency.

**Thermal DATA:** SonaSpray insulates by creating dead air spaces macroscopically between and within the hollow cellulose fibres.

**Mass:** Dry Weight of SonaSpray fc per 10mm thickness = 1.60 kg/m<sup>2</sup>  
Dry Weight of SonaSpray fc per 20mm thickness = 3.20 kg/m<sup>2</sup>

**Bonding to Substrate:** SonaSpray fc sound absorber can be applied to virtually any substrate; some surfaces may need priming to control suction. Old surfaces may need a barrier coating to prevent staining from leaching out of contaminants while the surface is wet. Fully cured SonaSpray fc will improve strength.

**Bond Strength:** SonaSpray fc >600 psf ASTM E-736

**Compression Strength:** SonaSpray fc >400 psf ASTM E-761

**Durability:** The adhesive used with SonaSpray fc sound absorber provides a strong, durable and resilient bond. When fully cured, surface strength of old plaster will typically improve by a large margin.

**Condensation Control:** For areas such as indoor pools, SonaSpray fc aids in condensation control. The proper combination of SonaSpray fc and ventilation prevents condensation on metal, concrete and other surfaces. SonaSpray fc sound absorber actually reduces ventilation requirements, saving in both the ventilation equipment cost and operating costs.

**RH Control:** SonaSpray fc is a natural humidity moderator. At times of increasing humidity SonaSpray fc will absorb large amounts of water vapour. When the humidity drops SonaSpray fc will exhale water vapour and maintain a balance. This characteristic promotes a healthy atmosphere.

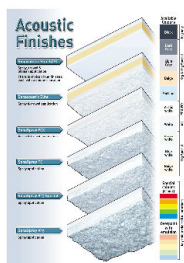
**Where to use:** SonaSpray fc can be quickly and effectively applied to most prepared surfaces and construction configurations. This allows minimum working down time in existing structures with abilities to meet critical deadlines in new construction. SonaSpray fc has a fine surface texture and is suited to ceilings of offices, restaurants, receptions, designer homes, school rooms, swimming pools; in fact it's an excellent sound absorber for any premium indoor space with a noise problem.

**Fire Performance Ratings:** UK Fire test by Warrington Fire Research:

- Class 1 to BS476 Part 7
- Class 0 to BS476 Part 6

**Maintenance:** SonaSpray fc can be over-painted or applied with additional coats of SonaSpray. Small areas of damage can be repaired by hand. Maintenance of this seamless decorative sound absorbing finish is minimal.

If SonaSpray fc is disturbed or damaged so that fibre is released into the atmosphere, the resulting contamination is harmless. Maintenance work can be undertaken while the building is occupied. Please refer to COSHH data for detailed product analysis.



[Click here to compare SonaSpray fc sound absorber with other finishes](#)



ISO 9001:2000  
Certified by QTS  
Quality Registrars, Inc.

SonaSpray Sound absorber s are manufactured by ICC, Houston, Tx  
ISO 9001: 2000 certification